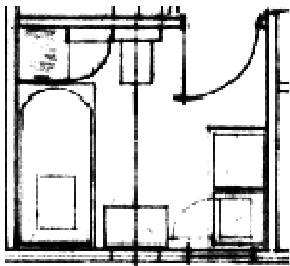


Earthsong Eco-Neighbourhood Stage 2

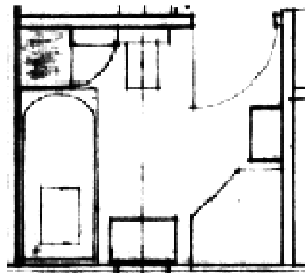
Purchase summary and unit options

Earthsong Eco-Neighbourhood
2.10.03

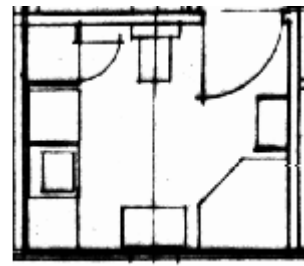
TERRACE HOUSE BATHROOM OPTIONS



Option (a)



Option (b)



Option (c)

OPTIONS – ALL UNITS	PRICE (gst inclusive)	
· Shower rose & hose upgrade	\$265	delete options
· Upgrade to canopy rangehood	\$510	not purchased
OPTIONS – TERRACE HOUSE ONLY		
Bathroom options (WC and basin are standard)		
· Bath with shower over + washing machine connection (a)	0	
· Bath + separate shower (b)	\$4675	delete 2 out of 3
· Shower + washing machine connection (c)	\$3115	
· Laundry tub + wing wall (additional to either a or c above only)	\$2470	delete options
· Downstairs WC + basin for terrace house	\$7340	not purchased
· Upstairs balcony over pergola for terrace house with french doors in lieu of window	\$9160	
TOTAL		

CAR SPACE	PRICE	
	(gst inclusive)	
Carpark	0	
Carport (Single car space)	\$9,600	

Carport (Single car space) - enclosable	\$12,600	delete 3 out of 4
Garage (Single car space)	\$19,900	

SUMMARY	NUMBER	PRICE (gst inclusive)
Unit		
Options	n/a	
Carspace		
GRAND TOTAL	n/a	